



Each cartridge pack content:

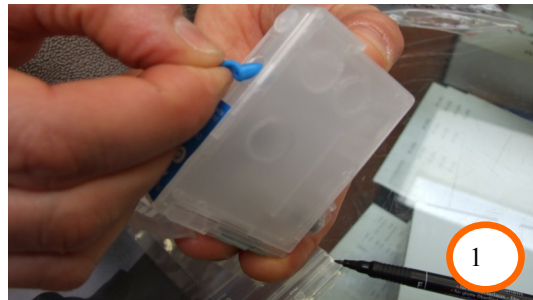
- 1 x cartridge with autoreset chip
- 1 x 10 cm steel needle
- 1 x plastic syringe



Refill instructions for empty cartridges EPSON 16/18/27

Thank you for choosing our products. Before installation read carefully this instructions. For any clarification or technical support contact our customer service www.cheapoffice.it

1) Remove the colored cap from the cartridge (Photo 1).



2) Aspirate with the syringe the ink from the bottle. (Photo 2).



3) Insert the ink in the cartridge until it is filled. (Photo 3).



4) Close the colored cap (Photo 4).



5) With a pen tip drill the plastic operculum that protect the valves (Photo 5)

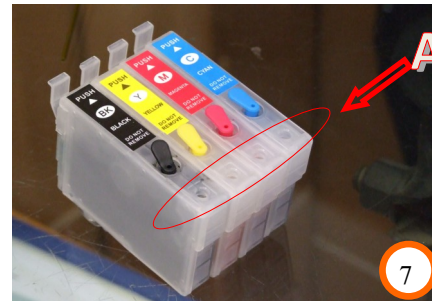


Cheap Office.

6) Aspirate 5/7 ml of ink with the syringe. (Photo 6)
This is necessary only the first time you refill the cartridge, afterwards you can insert the ink without this aspiration.



7) Now the cartridge is ready to use. It is important remove the transparent caps to let open the holes that allow the passage of air. (Photo 7)



8) Insert the cartridge in the printer, pressing with your fingers, until you hear the click. (Photo 8)



NOTE :THE CHIPS ARE AUTORESET, THE RESET OCCURS EVERY TIME THE CARTRIDGE IS REMOVED AND REINSERTED.

FOR ANY DOUBTS DURING THE ASSEMBLY, CALL THE ASSISTANCE

IMPORTANT NOTE: If the printer jams the paper or turn off suddenly, don't leave the printer in this position. You should remove the paper and turn on the printer, so the print trolley can resume the correct position. It will be necessary turn off the printer correctly, if the trolley stays out of the correct position, the print head could get dry and become unusable.

IMPORTANT NOTE: Refill the cartridges before the ink runs out completely. If this were to happen you have to repeat all the refill operations.

**DISTRIBUTED BY
CHEAP OFFICE
Rubiera RE
tel. 0522260545
Fax. 0522524725
www.cheapoffice.it**