

Thank you for choosing our products. Before installation read carefully this instructions. For any clarification or technical support contact our customer service: +39 0522/260545 www.cheapoffice.it



Profile designed
by x-rite



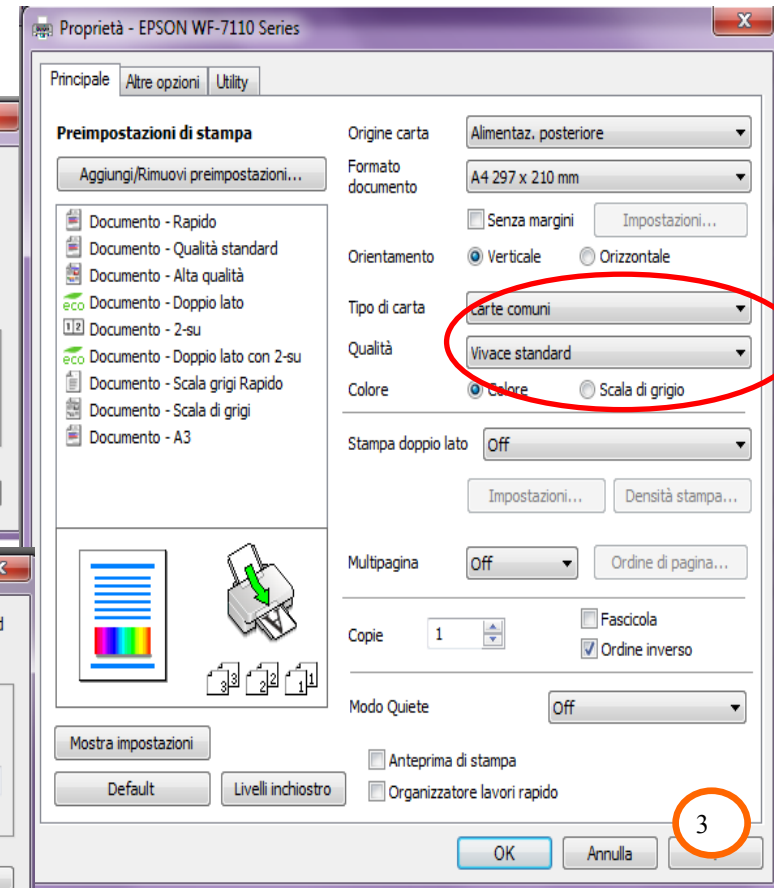
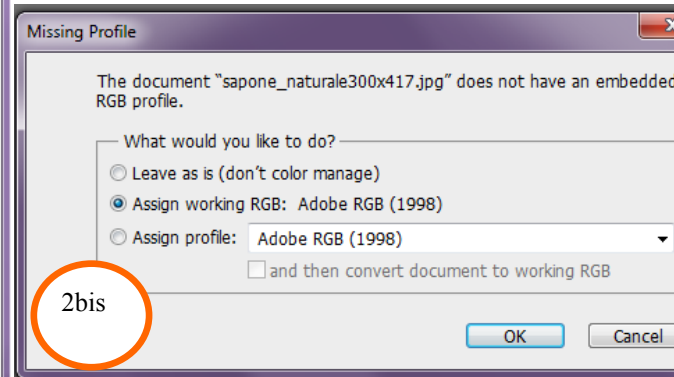
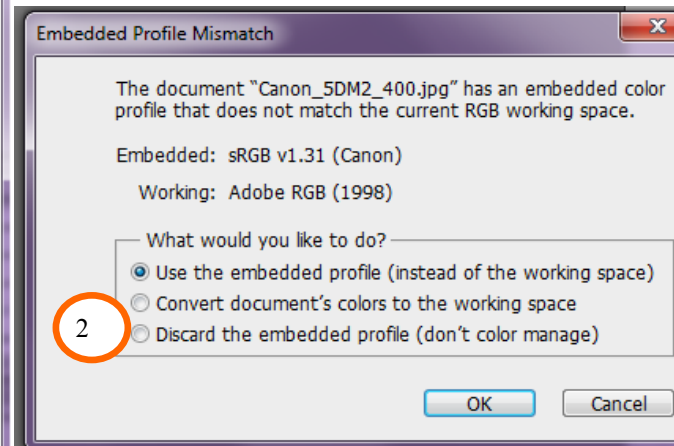
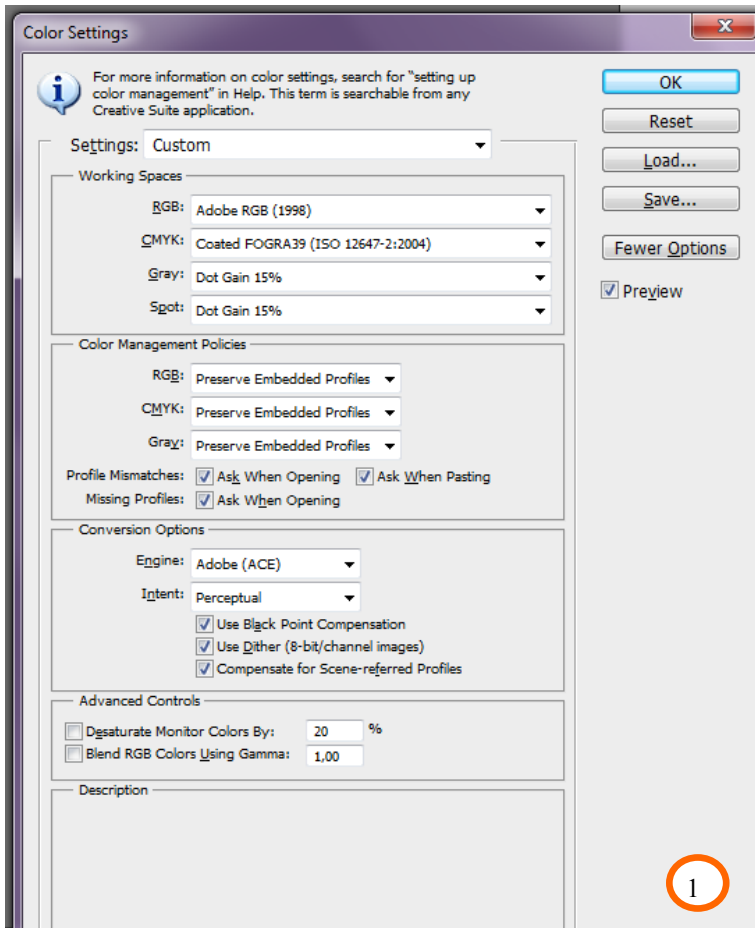
Powered by
OSMO INKS

1) The color profile (Osmo Ink - Sublimatico - WF7110), should be inserted in: C:/windows/system32/spool/driver/color

2) Set Photoshop in color settings: edit / color settings, insert the right settings (image 1).

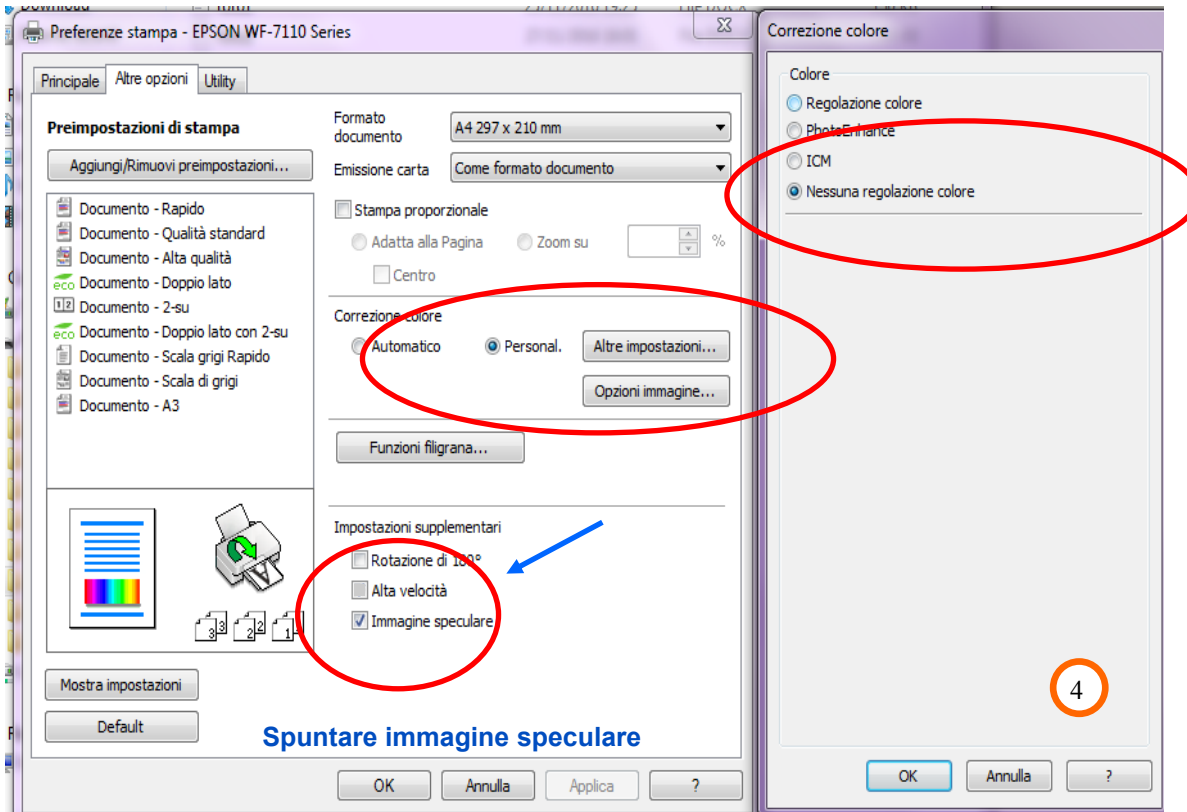
3) Open the file you want to print with Adobe Photoshop. If, opening the file, the incorporated color profile is recognized by Adobe a message will be opened, than behave like in the image 2; if the color profile isn't recognized you should select manually "assign working RGB: Adobe RGB 1998" Like in the image 2 bis. If the color profile is already setted the file will be automatically recognized and the image will be opened.

4) From Photoshop open the printing settings of Epson 7110 and set the driver like in the image 3.

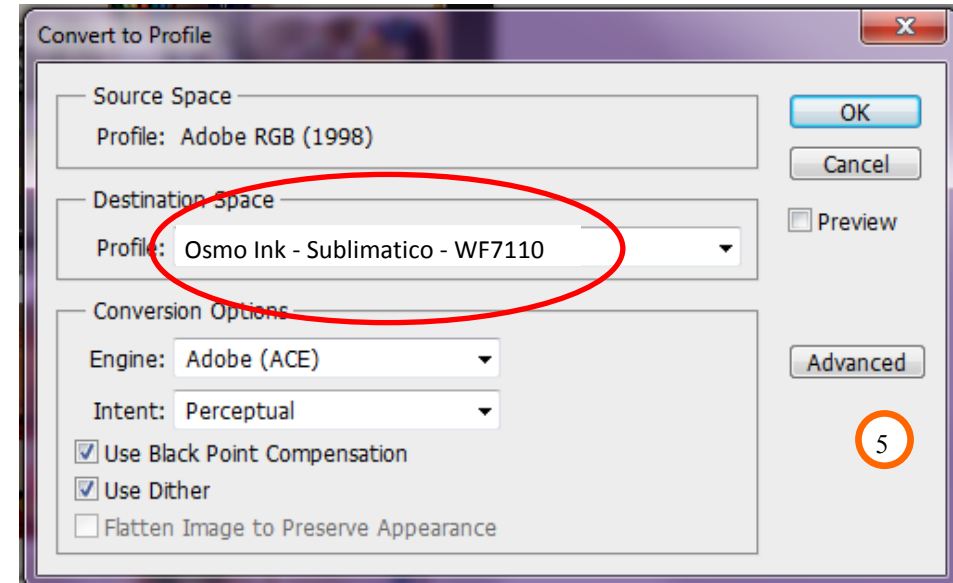


Cheap Office.

4) Set in the driver also the color correction, like in the **image 4**. Then click OK.



5) Now you can convert the image with Photoshop: edit / convert to profile, like **image 5**, then click OK.



6) Now you can print the image, you should select “mirror image” in print preference of the driver (**image 4**).

FOR ANY DOUBT CALL THE COSTUMER SERVICE: +39 0522/260545

DISTRIBUTED BY:
CHEAP OFFICE
Via Napoli 10 /a
42048
Rubiera RE
tel. 0522260545
Fax. 0522524725
www.cheapoffice.it