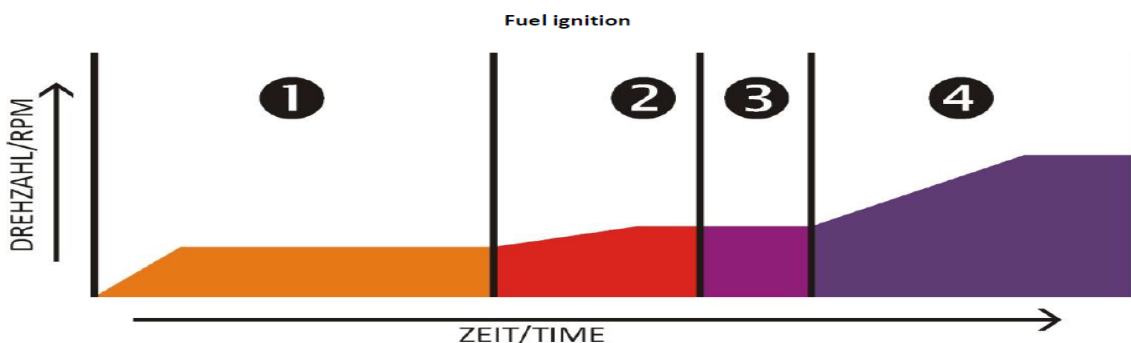


## HOW TO FIND A IGNITION PROBLEMS Rev2 2015

[info@jet-italia.it](mailto:info@jet-italia.it) or your Local Dealer



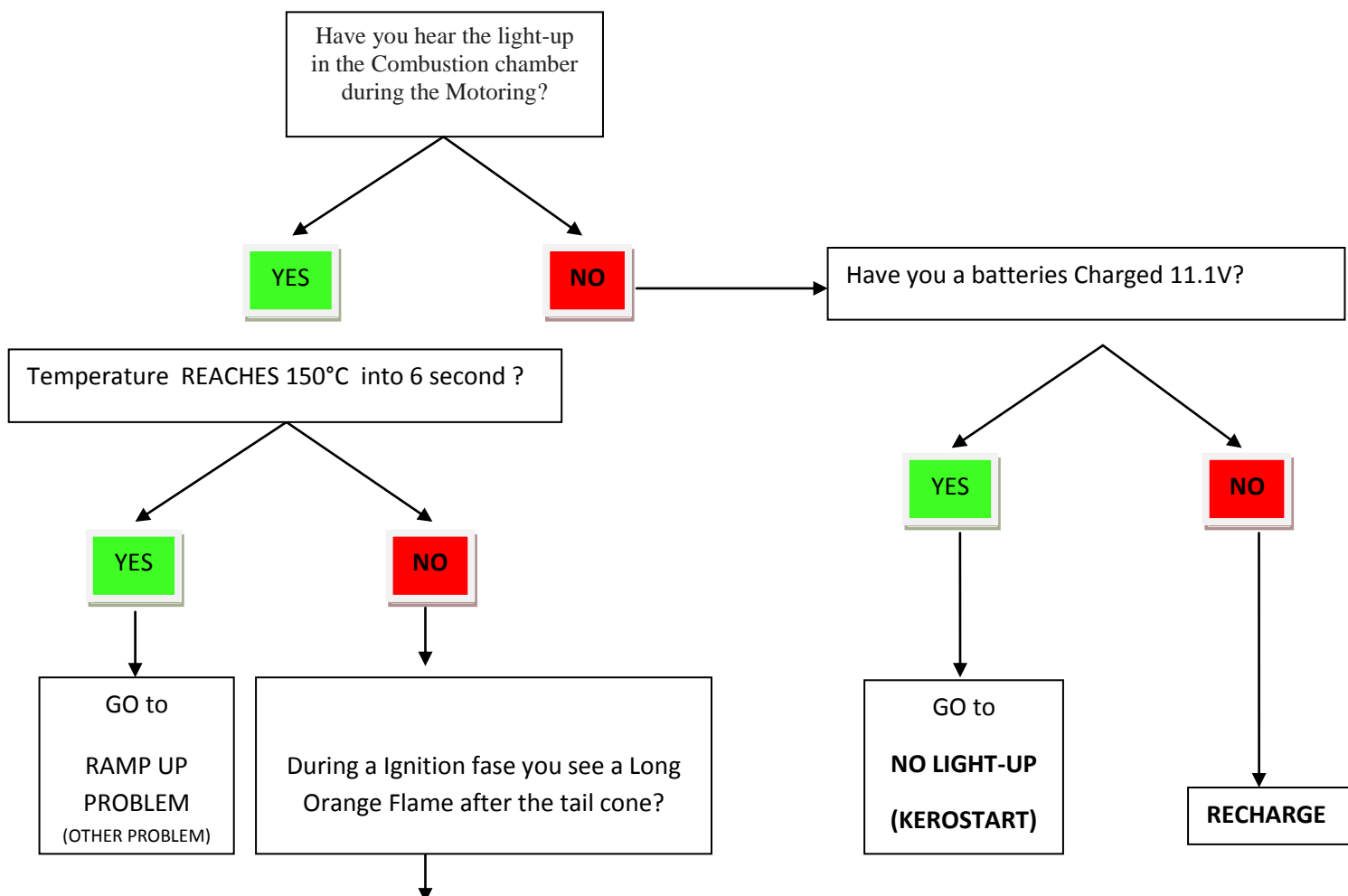
1 BURNER ON : Burner ON for 10 seconds

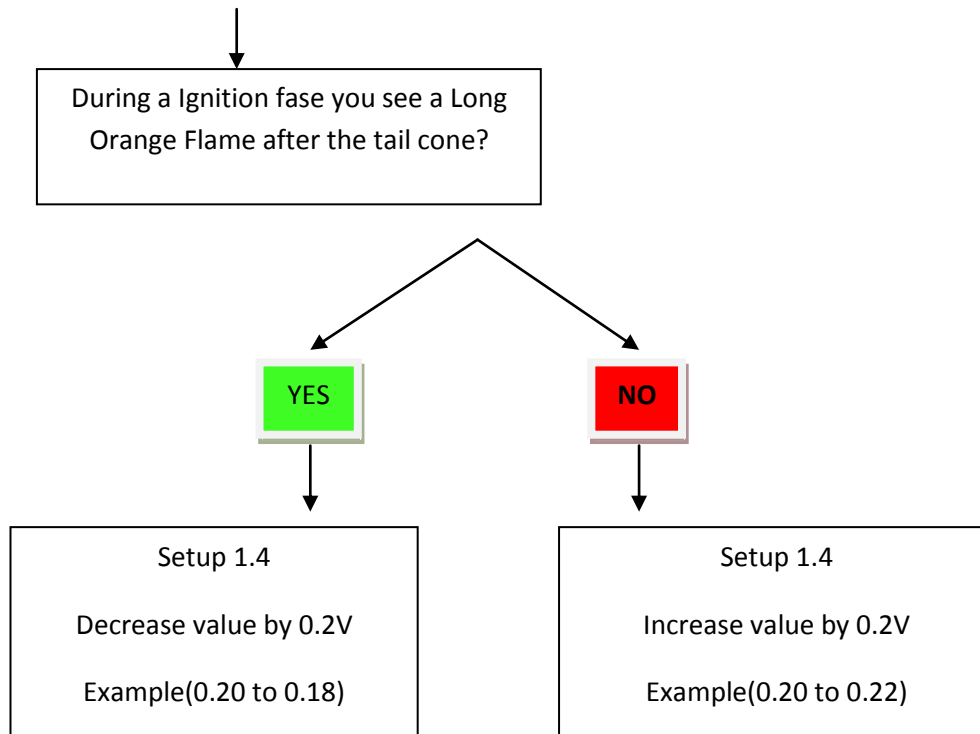
2 FUEL IGNIT : Pushing GAS/BURNER Valves - Starting Fuel Pump

FUEL HEAT : Heating Time 150°C into 6 seconds – Segue from burner Supply to fuel ignition

3 /4 RAMP UP : Increasing to idle 35K

### Ecu Show : NO KEROSENE IGNITION





Some time to increase the temperature must SET lower value of pump,  
because the kerosene in excess will not burn inside!!!!!!!!!!

**IF this Setting not solved the problem**

GO to  
**PUMP START VOLTAGE  
CALIBRATION INSTRUCTION**

## **NO LIGHT-UP**

- **CHECK** -right connections in the ECU between Kero Valve and Gas/Burner Valve
- **CHECK** -connections Kero Tube and Gas/Burner Tube in the right Festo
- **CHECK** - blow with a tube of 4mm into the Turbine Gas/Burner Nipple (usually red) if it is clogged
- **CHECK** - Gas/Burner Valve by the Menu 5 Test Function
- **CHECK** - GLOWPLUG by the Menu 5 Test Function
- If Ambient Temperature is less than 5°C you can Adjust 2.2 Glow Power at 7.5V
- **CHECK** - Fuel Pump not is stuck, by push I/o platine button (between ECU & GSU)
- Problem in the Buble Trap
- TUBE Plugged
- Fuel Filter Clogged

# PUMP START VOLTAGE CALIBRATION INSTRUCTION

Disconnect a KERO Main TUBE → put the tubes in a glass to assess quantity of kerosene filling out

TEST MENU 5 → V

5.1 PUMP TEST MENU → V

Use arrows ↑ ↓ to Set Value from 0.6 to 0.19

NOW if you PUSH {  
V fuel pump start at the Setting Value and you can check the quantity of kerosene  
X to stop the pump

NOW adjust the value to find a best quantity (continuously drips) **NORMALLY BETWEEN 0.16<0.20**

**IMPORTANT: THIS VALUE MUST BE INSERT TO SETUP 1.4 (PUMP START VOLTAGE)** and confirm V

This procedure is very important because models have a different type of Tanks, short and longs fuel line that can be change influence this value.

**IF THE PROBLEM PERSIST: CHECK NO LIGHT-UP LIST OF CONTROL**

## RAMP UP PROBLEM

**Turbine reach 150°C into 6 Seconds? YES**

1) You can check the Solenoid Valve, cables,Pipes

**Menu Test N.5**

Go to sub Menu TEST "KEROSENE VALVE"

And check that it's working good

2)You can made a Test Starter Motor

Go to sub Menu TEST 5 "STARTER"

And check that it's working good

**IF THE PROBLEM PERSIST: CONTACT A COMPANY PRODUCER**