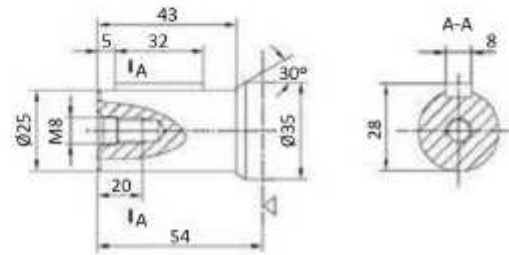
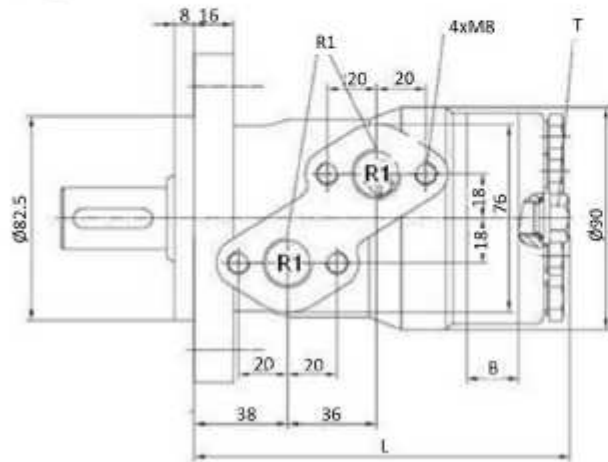
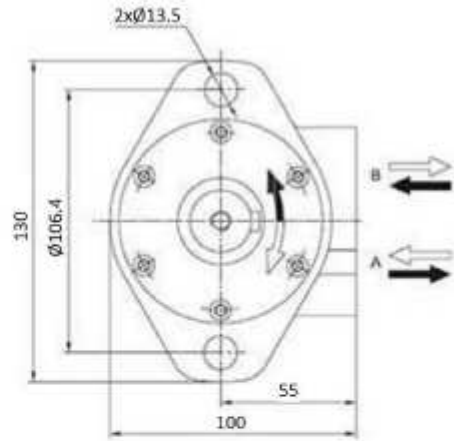
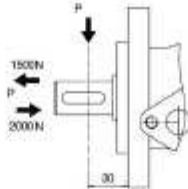
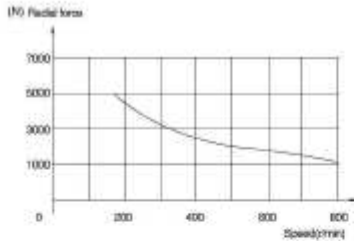


Hydraulic motors  
Hydraulic motors

## MOMP type motor



**Shaft:** cylindrical shaft, diameter 25 mm

**Max. flow interm.:** MOMP50 =60 (l/min); Others=75 (l/min)

**T:** drainage line, thread 1/4"

(Power in kW)

(Torque in daN.m)

Part nº	R1	Max. flow (l/min)	Max. press. cont.	Max. Peak press.	cm <sup>3</sup> /rev	R.P.M. cont.	R.P.M. int.	Max. torque cont.	Max. torque peak	Max. power cont.	Max. flow cont.	B	L
MOMP40	1/2" BSP	35	100	170	40	875	1125	4,5	7,5	6	35	5,5	140
MOMP50	1/2" BSP	40	140	210	50	800	1000	8,9	13	7	40	7	141
MOMP80	1/2" BSP	60	140	210	80	760	940	14,9	21,9	10,1	60	11	145
MOMP100	1/2" BSP	60	140	210	100	600	750	19	26,5	10,3	60	13	147
MOMP125	1/2" BSP	60	140	210	125	485	600	23,4	36,2	10	60	16	150
MOMP160	1/2" BSP	60	140	210	160	380	475	31	42,6	10	60	21	155
MOMP200	1/2" BSP	60	135	210	200	302	380	35,9	54,5	9,6	60	26	160
➔ MOMP250	1/2" BSP	60	105	175	250	240	302	35,1	58,5	7,4	60	32	166
MOMP315	1/2" BSP	60	80	160	315	190	235	34,2	68,4	5,6	60	42	176
MOMP400	1/2" BSP	60	65	140	400	150	190	34,8	68,8	4,6	60	52	186

\*\*\* Review attached PDF\*\*\*

\*Intermittent operation rating applies to 6 seconds of every minute.

\*Peak load rating applies to 0.6 seconds of every minute.