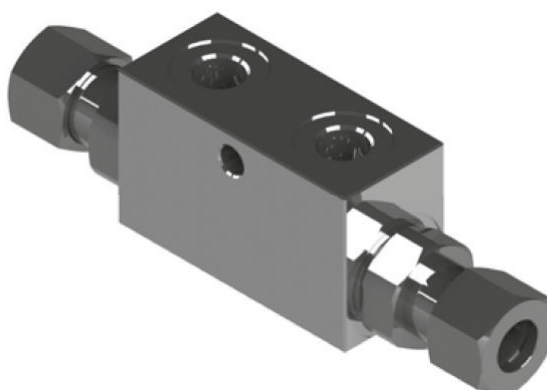
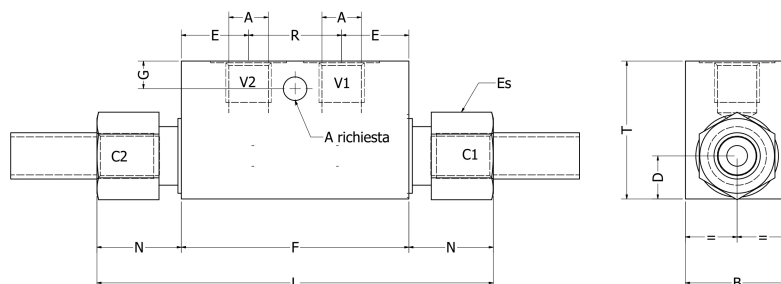
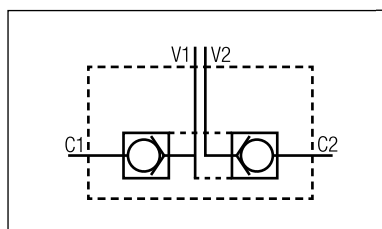


VALVOLA DI RITEGNO PILOTATA A DOPPIO EFFETTO IN LINEA - DIN 2353 DOUBLE PILOT CHECK VALVE LINE MOUNTING - DIN 2353

X	Collettore/Body	W	Attacco DIN/DIN connection	K	Interassi/Centre distances
0	1/4	0	12L	0	Solo valvola/Only valve
1	3/8	1	10L (1/4)	1	169
2	1/2	2	15L (1/2)	2	Da 169 a 320/From 169 to 320
				3	Da 320 a 520/From 320 to 520



SCHEMA IDRAULICO
HYDRAULIC DIAGRAM



TIPO/TYPE	A BSP	B	C1-C2	E	F	G	L	N	R	T	PRESSIONE MAX/MAX PRESSURE
VRDE/L14-25	1/4	30	Ø 12	20	66	7,5	133	32	32	40	350 bar
VRDE/L14-10	1/4	30	Ø 10	20	66	7,5	133	32	32	40	350 bar
VRDE/L38-25	3/8	30	Ø 12	20	66	7,5	133	32	32	40	350 bar
VRDE/L12-25	1/2	35	Ø 15	22	80	15	144	32	34	50	300 bar

APPLICAZIONE/APPLICATION

Le valvole VRDE sono utilizzate per bloccare in posizione un cilindro a doppio effetto.

Rapporto di pilotaggio: 1:4

Molle 3 bar (1/4-3/8) e 0,5 bar (1/2);

Tenuta a spillo;

Corpo in acciaio zincato

VRSE valves are used to lock a double acting cylinder.

Pilot ratio: 1:4

3 bar spring (1/4-3/8) and 0,5 bar (1/2);

Poppet type;

Steel body zinc plating