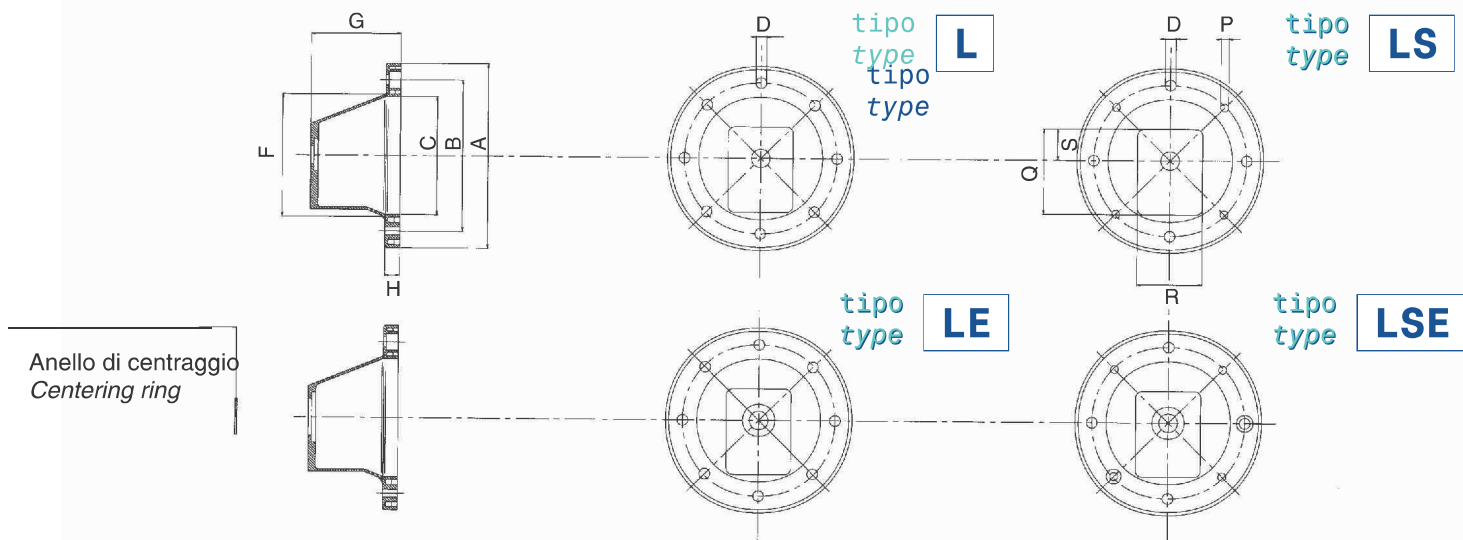


TIPOLOGIA DELLE LANTERNE DISPONIBILI / TYPE OF AVAILABLE BELLHOUSINGS

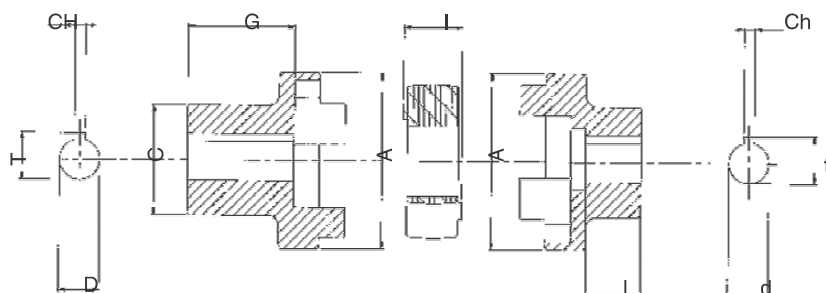


- L** 8 fori passanti lato motore
8 passing holes on motor side
- LS** 4 fori passanti + 4 fori filettati lato motore
4 passing holes + 4 threaded holes on motor side

- LE** 8 fori passanti lato motore e anello di centraggio in lamiera per estrazione del giunto
8 passing holes on motor side + sheet metal centering ring for the extraction of the coupling
- LSE** 4 fori passanti + 4 fori filettati lato motore e anello di centraggio in lamiera per estrazione del giunto
4 passing holes + 4 threaded holes on motor side + sheet metal centering ring for the extraction of the coupling

TABELLA 20
TABLE 20

Potenza motore 4 poli 1450 giri/1' Motor power 4 poles 1450 revs/min			Semigiunto lato motore Halfcoupling motor side						
kW	Tg. Size	Hp	Codice Part number	Dimensioni (mm) Dimensions (mm)					
				A	C	G	D	CH	T
0,12	63	0,16	ND 48A	48	30	19	11	4	12,8
0,18		0,25							
0,25	71	0,35	ND 48B	48	30	29	14	5	16,3
0,37		0,5							
0,55	80	0,75	ND 48C	48	38	54	19	6	21,8
0,75		1							
1,1	90	1,5	ND 48D	48	38	54	24	8	27,3
1,5		2							
0,55	80	0,75	ND 65A	65	42	47,5	19	6	21,8
0,75		1							
1,1	90	1,5	ND 65B	65	48	47,5	24	8	27,3
1,5		2							
2,2	100	3	ND 65C	65	53	57,5	28	8	31,3
4		5,5							
2,2	100	3	ND 86A	86	55	60	28	8	31,3
4		5,5							
5,5	132	7,5	ND 86B	86	73	88	38	10	41,3
9		12,5							
11	160	15	ND 108A	108	73	77	38	10	41,3
15		20							
18,5	180	25	ND 108B	108	84	110	42	12	45,3
22		30							
30	200	40	ND 108C	108	100	110	48	14	51,8
37		60							
45	225	60	ND 108D	143	100	110	55	16	59,3
45		60							
37	225	50	ND 143B	143	106	110	55	16	59,3
45		60							
37	225	50	ND 143C	143	137	140	60	18	64,4
45		60							



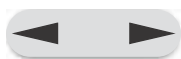
Caratteristiche lato motore
Characteristics of motor side

Caratteristiche lato pompa
Characteristics of pump side

Disegno Tab. 20/21

TABELLA 21
TABLE 21

Rif. pompa Pump code	Dimensioni (mm) lato pompa / Dimensions (mm) pump side					
	tipo / type	d	Ch	t	L	
05 M	cilindrico cylindric	6	2	7	10	
05 GT		7	2	8	10	
1 C	con 1:8 taper 1:8	12	3	13,3	13,5	
U1P		9,7	2,4	10,5	15	
1M		13,9	3	15,5	18,5	
2		17,2	3,2	18,5	23	
3U				4	23,6	28
35		25,6	5	4,76	27,8	35
				6,35		
4		33,3	7	35,5	45	
ZB		con 1:5 taper 1:5	9,8	2	10,2	12
ZF			16,9	3	17,7	19
ZG	25,2		5	26,3	29	



MOTORI FLANGIA B3-B5 / MOTORS WITH FLANGE B3-B5

kW	Tg Size	HP	Mot. 4 poli 1450 giri/1' Motor power 4p. 1450 revs/min	Rif. Pompa Pump code	Lanterna Bellhousing				Dimensione lanterna (mm) Dimensions of bellhousing (mm)								Giunto comp. serie ND Complete coupling ND series	Semigiunto Motore Halfcoupling motor side cod. P. number	Ins. elast. Rub. spider	Semigiunto pompa Halfcoupling pump side		Anelli di centraggio centering ring	Piedino Foot Flange Anello Amm. Suitable damping ring										
					LE	LSE	L	LS	A	B	C	D	F	G	H	P				Q	R			S	I	cod. P. number							
0,12 0,18	63	0,16	05 M	-	-	1401	140												ND 01 ND 02 ND 03 ND 04 ND 05	54	ND 48A	R 42	16	ND 48P05M ND 48P05GT ND 48PU1P ND 48P1C ND 48P1M ND 48PZB	- - RC1-254 RC1-30 -								
			U 1 P	1402	141	1402	141	140	115	95	10	100	60	11	M8	90	69	34															
			1 C 1 M ZB	1403	142	1403	142																										
		0,25	71	0,35	05 M	-	-	1601	160												ND 198 ND 1 ND 1A ND 2 ND 3 ND 3A ND 199	64	ND 48B	R 42	16	ND 48P05M ND 48P05GT ND 48PU1P ND 48P1C ND 48P1M ND 48PZB	- - RC1-254 RC1-30 -						
					U 1 P	1602	161	1602	161	160	130	110	10	110	70	14	M8	90	69	34													
					1 C 1 M ZB	1603	162	1603	162																								
	0,55 0,75	80	0,75	05 M	-	-	2101	210												ND 4B ND 4C ND 5A ND 6B ND 6C ND 300	81	ND 48CG45	R 42	16	ND 48P05M ND 48P05GT ND 48PU1P ND 48P1C ND 48P1M ND 48PZB	- - RC1-254 RC1-30 -							
				U 1 P	2102	211	2102	211	200	165	130	12	135	87	15	M10	90	69	34														
				1 C 1 M ZB	2103	212	2103	212																									
			1	80	1	05 M	-	-	2001	200												ND 4 ND 4A ND 5 ND 6 ND 6A ND 200	89	ND 48C	R 42	16	ND 48P05M ND 48P05GT ND 48PU1P ND 48P1C ND 48P1M ND 48PZB	- - RC1-254 RC1-30 -					
						U 1 P	2002	201	2002	201	200	165	130	12	135	95	15	M10	90	69	34												
						1 C 1 M ZB	2003	202	2003	202																							
1,1 1,5		90	1	2	2004	203	2004	203	200	165	130	12	135	95	15	M10	118	86	43	ND 7 ND 202	87	ND 65A	R 62	18	ND 65P2 ND 65PZF	RC1-365 -							
				ZF	-	-	LB21	LBS21																									
				T 250 3 U M 3 T 3 35 M 35 G 35 U ZG	2005 2006 2007 2008 2009 2010	205 206 207 208 209 213	- - - - - -	214															ND 50A ND 50B	116	ND 86HD20	R 82	20	ND 86H3U ND 86H35 ND 86HZG	RC2-508 RC2-60 RC2-603 -				
			2	90	2	U 1 P	2002	201	2002	201	200	165	130	12	135	95	15	M10	90	69	34	ND 50D ND 70A ND 70B ND 70C ND 70D	87	ND 48D	R 42	16	ND 48PU1P ND 48P1C ND 48P1M ND 48PZB	RC1-254 RC1-30 -					
						1 C 1 M ZB	2003	202	2003	202																							
						U 1 P	2002	201	2002	201	200	165	130	12	135	95	15	M10	90	69	34												
	2,2 4	100	1,5	2	2004	203	2004	203	200	165	130	12	135	95	15	M10	118	86	43	ND 8 ND 9 ND 9A ND 201	87	ND 65B	R 62	18	ND 65PU1P ND 65P1C ND 65P1M ND 65PZB	RC1-254 RC1-30 -							
				ZF	-	-	LB21	LBS21																									
				T 250 3 U M 3 T 3 35 M 35 G 35 U ZG	2005 2006 2007 2008 2009 2010	205 206 207 208 209 213	- - - - - -	214															ND 10 ND 203	87	ND 65B	R 62	18	ND 65P2 ND 65PZF	RC1-365 -				
			2	100	2	U 1 P	2501	250	2501	250	250	215	180	14	185	105	21	M12	118	86	43	ND 51A ND 51B	116	ND 86HD31	R 82	20	ND 86H3U ND 86H35 ND 86HZG	RC2-508 RC2-60 RC2-603 -					
						1 C 1 M ZB	2502	251	2502	251																							
						2	2503	252	2503	252	250	215	180	14	185	105	21	M12	118	86	43												
2,2 4		112	5,5	2	2504	252	2504	252	250	215	180	14	185	105	21	M12	118	86	43	ND 11 ND 12 ND 12A ND 13	97	ND 65C	R 62	18	ND 65PU1P ND 65P1C ND 65P1M ND 65P2	RC1-254 RC1-30 -							
				ZB	-	-	LB22	LBS22																									
				ZF	-	-	LB23	LBS23																									
			3	112	3	2	2504	253	2504	253												ND 204 ND 206											
						T 250 3 U M 3 T 3 35 M 35 G 35 U ZG	2505 2506 2507 2508 2509 2510	254 255 256 257 258 259	- - - - - -	254														ND 61 ND 61C		ND 65C	R 62	18	ND 65Q2 ND 65Q3U ND 65QZF ND 65QZG	RC2-365 RC2-508 -			
						2	2504	253	2504	253	250	215	180	14	185	115	21	M12	170	120	59												
	2,2 4	112	5,5	2	2504	253	2504	253	250	215	180	14	185	115	21	M12	170	120	59	ND 14 ND 15	107	ND 86A	R 82	20	ND 86P2 ND 86P3U ND 86PZF ND 86PZG	RC2-365 RC2-508 -							
				T 250 3 U M 3 T 3 35 M 35 G 35 U ZG	2505 2506 2507 2508 2509 2510	254 255 256 257 258 259	- - - - - -	254																									
				2	2504	253	2504	253	250	215	180	14	185	136	21	M12	209	158	88														
			4	112	4	2	2504	253	2504	253	250	215	180	14	185	136	21	M12	209	158	88	ND 208 ND 209											
						T 250 3 U M 3 T 3 35 M 35 G 35 U	2505 2506 2507 2508 2509 2510	254 255 256 257 258 259	- - - - - -	254																							
						2	2504	253	2504	253	250	215	180	14	185	136	21	M12	209	158	88												



MOTORI FLANGIA B3-B5 / MOTORS WITH FLANGE B3-B5

Mot. 4 poli 1450 giri/1' Motor power 4p. 1450 revs/min	Rif. Pompa Pump code			Lanterna Bellhousing				Dimensione lanterna (mm) Dimensions of bellhousing (mm)								Giunto comp. serie ND Complete coupling ND series	Semigiunto Motore Halfcoupling motor side cod. P. number	Ins. elast. Rub. spider	Semigiunto pompa Halfcoupling pump side		Anelli di centraggio centering ring	Piedino Foot Flange Anello Amm. Suitable damping ring			
	kW	Tg Size	HP	LE	LSE	L	LS	A	B	C	D	F	G	H	P				Q	R			S	I	cod. P. number
5,5 9	132	7,5 12	U 1 P	3010	310	3010	310	300	265	230	14	238	143	21	M12	170	120	159	R 82	20	NS 86PU1P	RC1-254	P - 300	A - 300	
			1 C	3011	311	3011	311														ND 900	NS 86P1C			RC1-30
			1 M	3001	300	3001	300														ND 901	NS 86P1M			RC2-365
			2	3001	300	3001	300														ND 901A	ND 86P2			RC2-508
			T 250	3002	301	3002	301														ND 16	ND 86P3U			RC2-508
			3 U	3003	302	3003	302														ND 17	ND 86PZF			-
			M 3	3004	303	3004	303														ND 210	ND 86PZG			-
			T 3	3005	304	3005	304														ND 211	-			-
			ZG	-	-	LB26	LBS26														ND 18C	-			-
			ZF	-	-	LB27	LBS27														ND 18A	-			-
			35 M	3006	305	3006	305														ND 18C	-			-
			35 G	3007	306	3007	306														ND 18C	-			-
35 U	-	-	-	-	ND 18C	-	-																		
11 15	160	15 20	2	-	-	3511	350	350	300	250	18	253	178	25	M16	235	235	117,5	R 103	24	ND 43A	ND 108P2	RC2S-365	P - 350	A - 350
			T 250	3512	351	3512	351														ND 43C	ND 108P3U	RC3-508		
			3 U	3513	352	3513	352														ND 43C	RC2S-508	RC3-508		
			M 3	3514	353	3514	353														ND 43D	ND 108PZF	-		
			T 3	3515	354	3515	354														ND 43E	ND 108PZG	-		
			ZF	-	-	LB31	LBS31														ND 21	ND 108Q35	RC3-603		
			ZG	-	-	LB32	LBS32														ND 21	ND 108Q35	RC3-603		
			35 M	3506	355	-	-														ND 22	ND 108Q4	RC3-635		
			35 G	3507	356	-	-														ND 22	RC3-635	RC3-635		
			35 U	-	-	-	-														ND 22	-	-		
			4 M	3508	357	-	-														ND 22	-	-		
			4 T	3509	358	-	-														ND 22	-	-		
4 U	-	-	-	-	ND 22	-	-																		
18,5 22	180	25 30	2	-	-	3511	350	350	300	250	18	253	188	25	M16	230	175	77	R 103	24	ND 44A	ND 108P2	RC2S-356	P - 350	A - 350
			T 250	3512	351	3512	351														ND 44C	ND 108P3U	RC3-508		
			3 U	3513	352	3513	352														ND 44C	RC2S-508	RC3-508		
			M 3	3514	353	3514	353														ND 44D	ND 108PZF	-		
			T 3	3515	354	3515	354														ND 44E	ND 108PZG	-		
			ZF	-	-	LB31	LBS31														ND 25	ND 108Q35	RC3-603		
			ZG	-	-	LB32	LBS32														ND 25	ND 108Q35	RC3-603		
			35 M	3506	355	-	-														ND 26	ND 108Q4	RC3-635		
			35 G	3507	356	-	-														ND 26	RC3-635	RC3-635		
			35 U	-	-	-	-														ND 26	-	-		
			4 M	3508	357	-	-														ND 26	-	-		
			4 T	3509	358	-	-														ND 26	-	-		
4 U	-	-	-	-	ND 26	-	-																		
30	200	40	T 250	4001	400	-	-	400	350	300	18	299	188	25	M16	272	247	123	R 103	24	ND 40	ND 108Q3U	RC3-508	A - 400	
			3 U	4002	401	-	-														ND 41	ND 108Q35	RC3-603		
			M 3	4003	402	-	-														ND 41	RC3-603	RC3-603		
			T 3	4004	403	-	-														ND 42	ND 108Q4	RC3-635		
			T 3	4004	403	-	-														ND 42	RC3-635	RC3-635		
			35 M	4005	404	-	-														ND 299	ND 108QZG	-		
			35 G	4006	405	-	-														ND 299	-	-		
			35 U	-	-	-	-														ND 299	-	-		
			4 M	4007	406	-	-														ND 299	-	-		
			4 T	4008	407	-	-														ND 299	-	-		
			4 U	-	-	-	-														ND 299	-	-		
			ZG	-	-	LB30	LBS30														ND 299	-	-		
ZF	-	-	LB31	LBS31	ND 299	-	-																		
37 45	225	50 60	T 250	-	-	4505	455	450	400	350	18	350	218	25	M16	287,5	175	137,5	R 132	29	ND 32	ND 143P3U	RC3-508		
			3 U	-	-	4506	456														ND 33	ND 143PZG	RC3-603		
			M 3	-	-	4507	457														ND 33	RC3-603	RC3-603		
			T 3	-	-	4508	458														ND 30	ND 143P35	RC3-603		
			ZG	-	-	LB35	LBS35														ND 30	RC3-603	RC3-603		
			35 M	-	-	4501	450														ND 30	-	-		
			35 G	-	-	4502	451														ND 30	-	-		
			35 U	-	-	-	-														ND 30	-	-		
			4 M	-	-	4503	452														ND 31	-	-		
			4 T	-	-	4504	453														ND 31	-	-		
			4 U	-	-	-	-														ND 31	-	-		

Applicazioni speciali

Per tutte le applicazioni che non rientrano nei casi normali specificati in questi cataloghi contattare l'ufficio commerciale della OMT S.p.a. per un eventuale studio di fattibilità

Special applications

For all applications not foreseen by this catalogue please contact our commercial department. We will be pleased to verify the possibility to realize a special connection.

